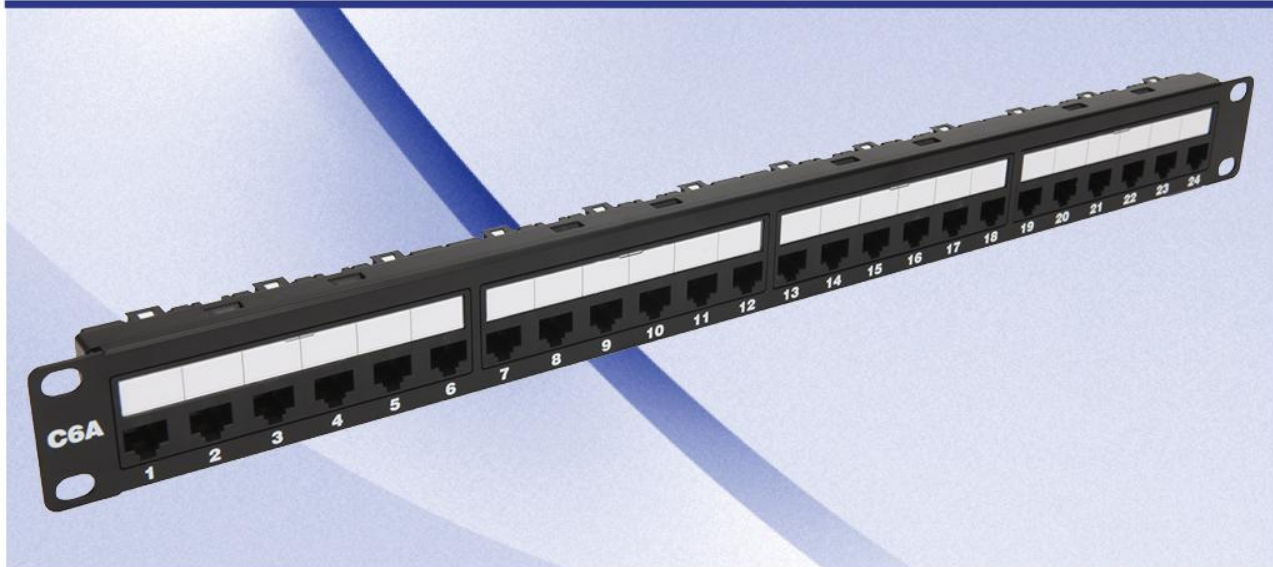


NETWORK COMMUNICATION SOLUTIONS

CAT6a iPORT SERIES

CAT6a 24 PORT UTP FAST ETHERNET PATCH PANELS (IDC Type)



FEATURES

- » Hinged label holder for easy label changes
- » Projecting portion of IDC terminal can hold wires in position before termination
- » Each 6 Port based module is replaceable
- » Compatible with both 110 or Krone termination tools

STANDARDS & PHYSICAL SPECIFICATIONS

- » UL 1863 safety listed
- » UL 94V-0 fire retardant plastic
- » ANSI/TIA-568-C.2
- » 482.6mm(W) x 43.65mm(H) x 32.55mm(D)

APPLICATION

- » For CAT 6A UTP solutions 10 Gigabit.
- » Compatible with ANSI/TIA-568-C.2 CAT 6A component performance
- » Suitable for 10 Gigabit ethernet applications.

CERTIFICATES AND TEST NUMBERS

- » UL CODE: Patch panels shall be UL Listed under file number E357669
- » 3P CODE: P/N TTAF Attestation of Conformity No.113796



Art No

FO-SP-3000-PCB-24PC6A

Product Description

1U 24 Port UTP Cat6a Patchpanel (110 Krone IDC - Vertical)

