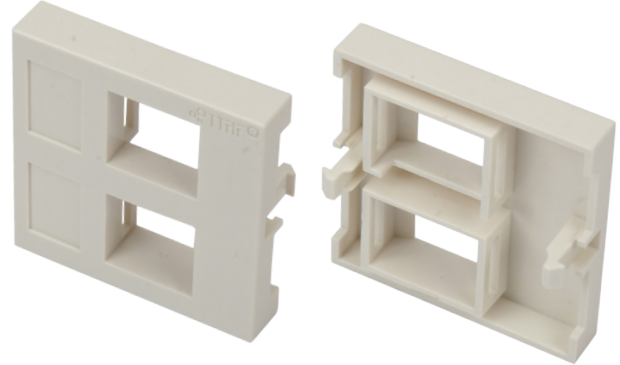


## HDMI / HDMI - V1.4 ADAPTOR



## HDMI & USB FACE PLATE



### MATERIAL

Coupler Housing : ABS High-Impact UL94V-0 Thermoplastic  
 Contact : 3U" Gold-Plated.  
 Color : White  
 RoHS Compliant

### PHYSICAL CHARACTERISTICS

Durability Matingcycle : 1000 Cycles Min.  
 Insertion Force : 4.5Kgf Max.  
 Withdraw Force : 0.5Kgf-4Kgf.  
 Operation Temperature : -55°C to 85°C.

### ELECTRICAL

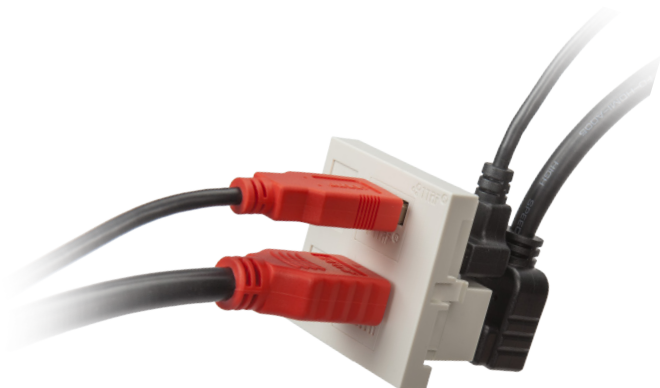
Contact Current Rating : 0.5A Min.  
 Voltage Rating : 40V AC(RMS)  
 Insulation Resistance : 100M ohms Min.  
 Contact Resistance : 2 Ohm Max.  
 Dielectric With Standing Voltage : 300 V. AC.

### MATERIAL

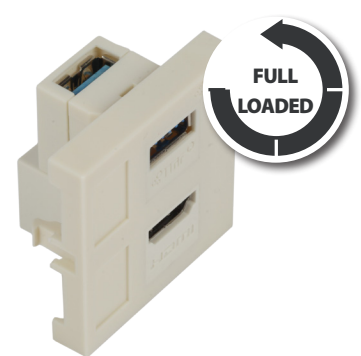
Housing : White ABS High-Impact  
 UL94V-0 Thermoplastic

### PHYSICAL CHARACTERISTICS

Durability : EIA 364-09 , 1500 Cycles.  
 Dimension : 45X45 mm.



2 PORT HDMI&USB 2.0  
FACE PLATE



2 PORT HDMI&USB 3.0  
FACE PLATE

Art No	Product Description
FO-AD-HDMI	22,5 X 45 HDMI Adaptor

Art No	Product Description
FO-FW04-2E-WH	45x45 2 Port HDMI&USB Face Plate ( Unloaded )
FO-FW04-2L-WH2	45x45 2 Port HDMI&USB 2.0 Face Plate ( Full Loaded )
FO-FW04-2L-WH3	45x45 2 Port HDMI&USB 3.0 Face Plate ( Full Loaded )

