

## PATCHPANELS

1U

19"

24

PORT

W

RAIL

M

MODULE

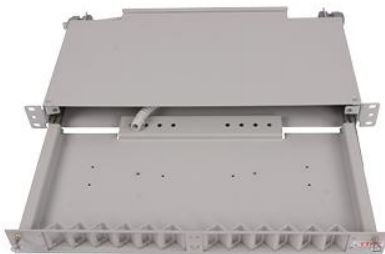
### EXCLUSIVE SERIES TERMINATION BOXES

#### 19" 1U 24 PORT SLIDING WITH TELESCOPIC RAIL & METAL MODULE TYPE



The TTAF Fiber Optic Termination Boxes are used to terminate and distribute optical fiber cables, termination box is ranging from 12 ports to 216 ports. They are convenient equipment to organize and connect the fiber optic links. It is suitable for the use in telecommunication network, central office optical

cable system and premise fiber network. Each fiber optic termination box is fully loaded with adaptors, splice trays and accessories and is ready for installation. TTAF supplies various kinds of sliding type fiber optic patch panels with different optical adapter interface.



#### FEATURES

- Modular front panel and adapter holds
- Includes center element management holder
- 1U-2U models are available
- Up to 24-48 fo connections with 6 pack adapter structure
- Compatible with screwed adapters and lock type adapters
- Can be rear or front mounted by arranging the brackets
- Provides eyes protection
- With rail & metal module mounted
- Can be supplied with
  - » Pigtailed
  - » Special splice cassette
  - » Heat Shrink splice protectors

#### TECHNICAL SPECIFICATIONS

Size (w:19",h:1U)	(w):485mm x (d): 260mm x (h):44.50mm(1U)
Weight	Approx 4,80 kg
Fiber Capacity	0-48 port
Adaptor Type	SC(SX),SC(DX),LC(DX),LC(QX),E2000(SX),MU(DX)
Color	Ral9005 Black , Ral7035
Mounting	19" / 21" Rack Type
Material	Mild Steel