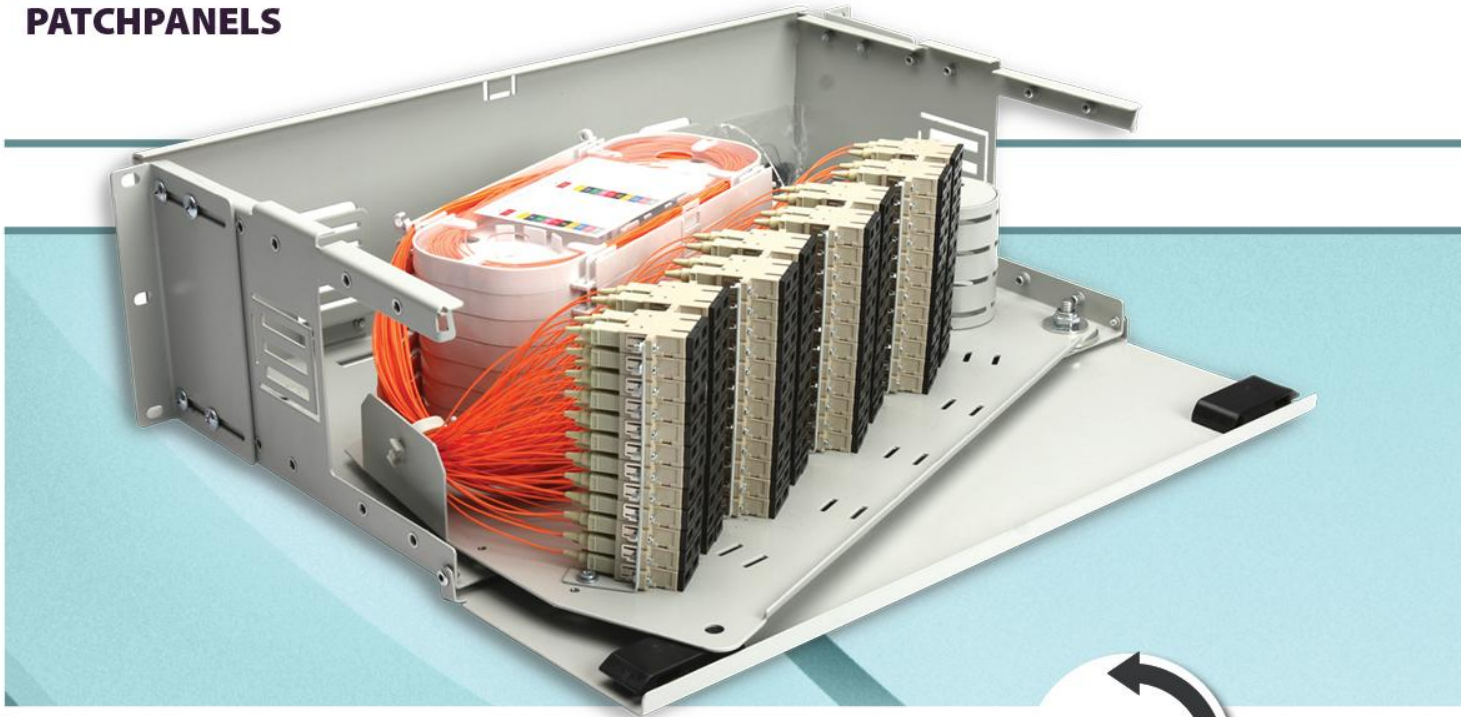
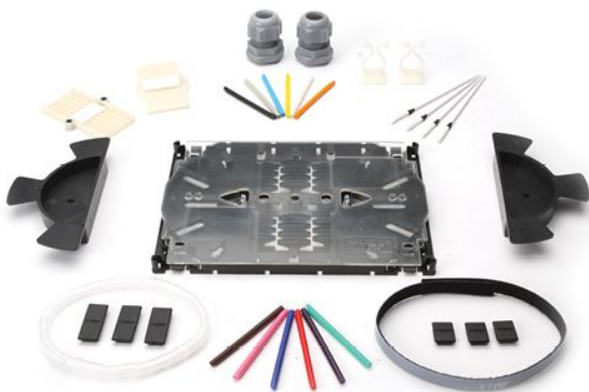


PATCHPANELS



FEATURES

- Up to 192-216 Fo connections
- Available to suit only adapter type
- You can apply ST/SC/FC/E2000/MU/MTRJ/LC
- Without rail
- Maintains fiber bending radius throughout for terminated optical fibers at 30mm
- Units can be custom design
- Compatible with screwed adapters and screwless type adapters
- Can be supplied with:
 - » Pigtail
 - » Special splice cassette
 - » Heat Shrink splice protectors



TECHNICAL SPECIFICATIONS

| | |
|-------------------|--------------------------------------|
| Size (w:19" h:3U) | (w): 485mm x (d): 270mm x (h): 138mm |
| Weight | Approx 10,00 kg |
| Fiber Capacity | 0-216 port |
| Adaptor Type | ST, FC, SC, LC, E2000, MTRJ, MU |
| Color | Ral9005 Black, Ral7035 |
| Mounting | 19" / 21" RackType |
| Material | Mild Steel |