

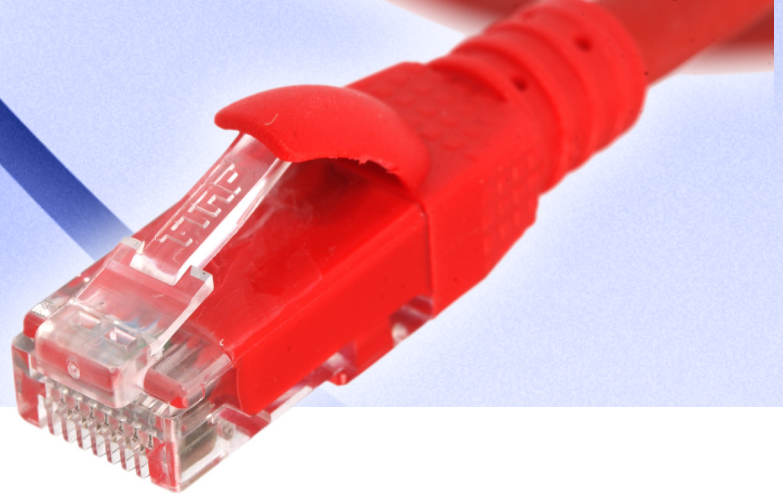
# NETWORK COMMUNICATION SOLUTIONS

## CAT6 SERIES

### UTP CAT6a PATCH CABLES



# PATCH CABLE CAT6a



### APPLICATIONS

- » Designed for use with Gigabit networks
- » Patches from hub to distribution panel
- » Connects workstation to wall outlet
- » 10 Base-T, 100 Base-TX Fast Ethernet, 1000Base-T (IEEE802.3)
- » Token Ring 4-16 Mbit, 155-622 Mbit ATM
- » ISDN, Voice, T1
- » Power over Ethernet (POE)
- » 500 Mhz Broadband Video

### TECHNICAL SPECIFICATIONS

- » Outer Diameter : 6,2 mm(nom)
- » Durability : 1000 Loop
- » Impedance : 100 ohm
- » Contact Resistance : 20m Ohm max.
- » Imbalance Resistance : %2 Max
- » Dielectric Strength : 1000 Volt/1 minute min.
- » Isolation Resistance : 500MOhm min.@500 Vdc
- » Storage Temperature : -40°C.....+80°C
- » Operating Temperature : -20°C.....+60°C
- » Outer jacket : PVC / LSZH
- » Retention : 50 N ( 11 IBF ) for 60 ± 5 s
- » Mating cycle life : Min. 1000 cycles
- » Tensile strength : ≥ 20 N per wire
- » Type : Unshielded RJ45 8P8C modular plug.
- » Housing : UL listed 94V-0 flame retardant polycarbonate
- » IDC blades : Phosphor bronze, gold plating over 100 µ in of nickel in contact area.

### STANDARD AND PERFORMANCES

- » ANSI / EIA / TIA 568-C.2
- » ISO / IEC – 11801
- » EN 50173
- » IEC 60603-7-4
- » 10 GBASE -T 10 Gigabit Eth.



COLOUR \_\_\_\_\_ LENGTH \_\_\_\_\_  
FO-UTP-CAT6a-XYZZZ

Art No

Product Description

FO-UTP-CAT6a-XYZZZ

UTP Cat6a Patchcord L: x meter.

